



TOPROAD

TRAFFIC FACILITY INC.

ONE STOP FOR ALL YOUR CONSTRUCTION NEEDS

View More 

Tel: +86 15668659958

Email: export@toproadtraffic.com

Web: www.toproadtraffic.com

Add: No.6, Xinlin North Road, Changxing County, Zhejiang Province, China



10⁺ YEARS

✓ Huge Inventories

✓ Custom Packaging

✓ Careful Service

✓ Professional Technical Support

✓ Factory Inspection

✓ One-stop Purchase of Raw Materials

TOPROAD MAIN PRODUCTS



✓ Road Marking Paint



✓ Retroreflector Meter



✓ Road Marking Machine

TOPROAD INTRODUCTION



Toproad Traffic Facility Inc.

The Ministry of Foreign Trade was established in 2018, focusing on the research and development, production, sales, and construction support of road sign coatings.

We mainly produce various road marking coatings, including hot melt, room temperature, colored anti slip pavement, two-component and construction brackets.

The company adopts a "dumbbell shaped" production and operation model, integrates advanced domestic and foreign resource elements, cooperates with well-known enterprises to develop cutting-edge technology, breaks through low-end production links, expands and strengthens technology and market, and is committed to providing the highest quality road marking paint products for transportation, highways, public security and traffic police, municipal and other departments. Widely used in highways, urban roads, ports, airports, tourist areas, industrial and mining enterprises, and other places.

Our company currently produces 20,000 tons of various logo coatings annually, with a sales network throughout East China and exported to Southeast Asia, the Middle East, Central Asia, Africa, South America and other countries and regions, receiving unanimous praise from domestic and foreign customers.

COME UPON CALL, FIGHT UPON ARRIVAL, AND WIN IN BATTLE

20000 Tons
VARIOUS MARKING

10000 m²
TOTAL CONSTRUCTION AREA

QUALIFICATION HONOR



Thermoplastic Road Marking Paint

Ordinary Road Marking Paint

Composition: Thermoplastic ordinary paint is composed of petroleum resin, EVA, PE wax, pigments and fillers, and other materials.

Features: It has a full line shape, strong wear resistance, anti fouling, and bright colors.

Construction requirements: It should be in powder form at room temperature, heated to 180-220 ° C using a hot melt kettle, stirred and insulated for 3-5 minutes, and then in a flowing state.

Reflective warning: During construction, reflective microbeads are sprinkled on the surface, which has a good reflective effect at night.



Ordinary	Road marking paint
Main base materials: piperylene C5 petroleum resin	
Theoretical Coverage: 4-5kg/ m ²	
Construction temperature: 180 ° C -220 ° C (The specific temperature depends on the condition of the coating used, as well as the season and temperature during construction)	
Non stick tire time: ≤ 3 minutes (at 23 ° C)	

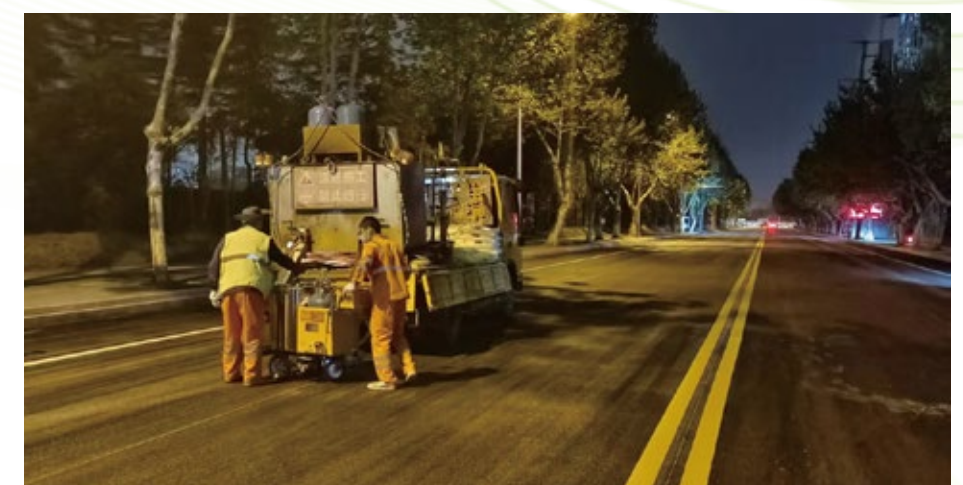
Oscilating Road Marking Paint

Oscillating Road marking paint is an evolution from ordinary marking paint. By adding an appropriate amount of forming agents and improving the formula, the protruding effect can be achieved. Currently, the protruding shape of oscillating road marking paint is generally block shaped, with block shaped marking accounting for more than 99% of the market share. Other shapes include dots, ribs, etc.



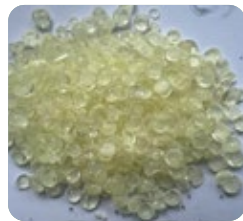
Oscillating	Road marking paint
Main base materials: piperylene C5 petroleum resin	
Theoretical Coverage: 6 - 8kg/ m ²	
Construction temperature: 180 ° C -220 ° C (The specific temperature depends on the condition of the coating used, as well as the season and temperature during construction)	
Non stick tire time: ≤ 5 minutes (at 23 ° C)	
Shelf life: 12 months without opening (if there is clumping during the shelf life, it will not affect the use after being crushed)	

Engineering Case Effect



Raw Material Description

Hot melt marking paint is essentially a mixture, and its performance characteristics are determined by raw materials, so the quality and proportion of raw materials directly affect the quality and price of coatings.



C5 Petroleum Resin

We use C5 petroleum resin with high content of isoprene, which has light color, high heating stability, good fluidity, and stronger adhesion.



Medium Chrome Yellow

High temperature resistance, high weather resistance, strong coloring power, long-lasting color



EVA

High VA content, excellent flexibility, and good compatibility with C5 petroleum resin, significantly improving the adhesion and flexibility of the coating, preventing cracking.



Titanium Dioxide

Rutile type titanium dioxide, covered with aluminum coating, has excellent dispersibility, weather resistance, and coverage, and extremely high whiteness. The brightness factor of the markings has been greatly improved.



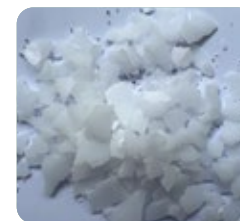
Calcium Carbonate Powder

We use the best mineral resources from China's production areas and have the best whiteness in China. Reasonable particle size distribution, low oil absorption, better integration with C5 petroleum resin, high compressive strength, good fluidity, and excellent anti settling properties of the coating.



Pre Mixed Glass Beads

Produced in a horizontal furnace, the glass beads have a roundness of over 95%, are crystal clear and transparent, and have excellent reflectivity.



PE Wax

A specialized PE wax synthesized based on the characteristics of hot melt coatings has a narrow molecular weight distribution, excellent lubricity, dispersibility, and anti settling properties. It also has faster drying time, higher compressive strength, and better texture.



Plasticizers

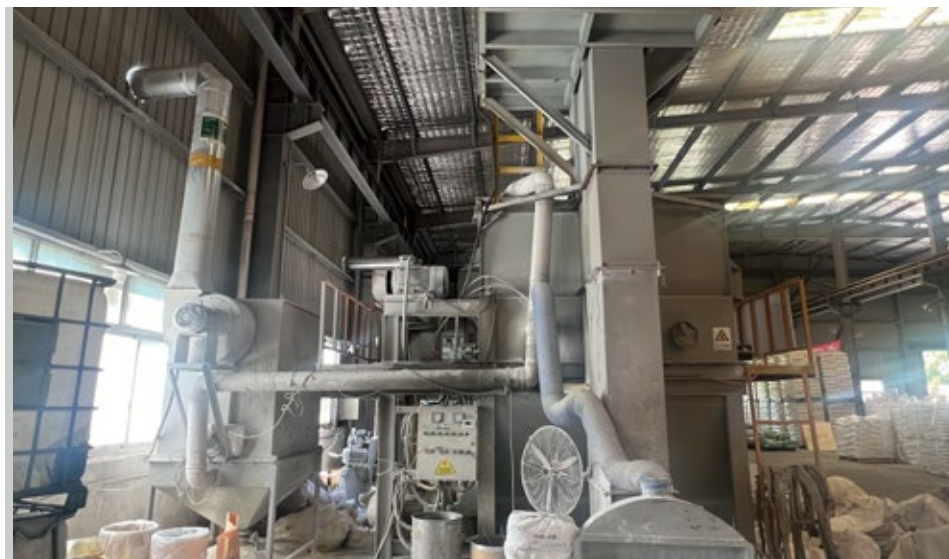
Using a plasticizer specifically designed for hot melt coatings, it has a high molecular weight and boiling point, making it less prone to precipitation. Make the coating have excellent elongation and flexibility.

Product System of Thermoplastic Road Marking Paints

No.	Thermoplastic road marking types (white)		Basic performance					Glass beads content	Glass beads roundness	Glass beads particle size (mm)
			Whiteness	Luminance factor	Liquidity (mm ²)	50℃ impact resistance	Softening point (℃)			
1	Normal type	Normal type	75±2	0.8±0.1	90±5	3±0.5	105±5	0%	/	/
		Normal customized type	70±10	0.8±0.5	90±5	3±1.5	110±10	0%	/	/
2	Reflective type	Normal reflective type	78±2	0.82±0.1	90-95	3±0.5	105±5	≥20%	95%±2%	0.85-0.18
		Classic reflective type	80±2	0.85±0.2	90-95	3±0.5	105±5	≥25%	95%±2%	0.85-0.3
		Reflective customized type	75±8	0.82±0.2	90-95	3±0.5	110±10	5%-35%	95%±2%	1.18-0.18
3	Convex type	Normal convex type	75±2	0.75±0.3	50±5	5±0.5	125±5	0%	/	/
		Convex customized type	75±8	0.75±0.8	50±5	5±0.5	125±5	0%-35%	95%±2%	0.85-0.18
4	Continuous reflective type	Reflective type with 350 high luminance	82±2	0.85±0.2	90±5	8±0.5	110±5	≥35%	95%±2%	1.4-0.3
		Continuous reflective type with 350 high luminance	80±5	0.85±0.2	90±10	8±2	110±10	25%-35%	95%±2%	1.4-0.18
5	Customized type according to international standards	Chinese standard JT/T280-2022	80-85	0.85-0.87	90±5	10±2	110±10	≥35%	95%±2%	0.85-0.3
		Customized type according to international standards	75-85	0.8-0.87	90±5	2.0-10	95-130	20%-35%	75%-95%	1.4-0.18
6	Rainbow Type	Colorful basic type	/	/	/	/	/	/	/	/
		Colorful Customized type	/	/	/	/	/	/	/	/

No.	Thermoplastic road marking types (white)		Description
1	Normal type	Normal type	Construction-friendly, meets basic requirements, cost-effective
		Normal customized type	Customize the most cost-effective products according to different climates, different environments and different construction requirements
2	Reflective type	Normal reflective type	Construction-friendly, meets basic requirements, cost-effective
		Classic reflective type	Construction-friendly, can meet high-demand requirements about retroreflective rate, and take into account later retroreflective rate
		Reflective customized type	Customize the most cost-effective products according to different climates, different environments, and different construction requirements
3	Convex type	Normal convex type	Construction-friendly, meets basic requirements, cost-effective
		Convex customized type	Customize the most cost-effective products according to different climates, different environments, and different construction requirements
4	Continuous reflective type	Reflective type with 350 high luminance	Resin content ≥16%, titanium dioxide content ≥6%, 350 retroreflective rate after 14 days, 150 after one year, 100 after two years
		Continuous reflective type with 350 high luminance	Customize the most cost-effective products according to different climates, different environments, and different construction requirements
5	Customized type according to international standards	Chinese standard JT/T280-2022	Resin content ≥18%, titanium dioxide content ≥6%, meeting all indicators
		Customized type according to international standards	Customize the best cost-effective products according to the standards of different countries.
6	Rainbow Type	Colorful basic type	Basic red, yellow, blue, green and can be customized colors according to requirements. The pigment is separated from the basic paint for easy construction.
		Colorful Customized type	

Factory Introduction



Spot Storage



Transportation



Measuring Instrument Machinery



Retroreflectometer for Road Marking



Open Light Source On Rainy Night Retroreflectometer



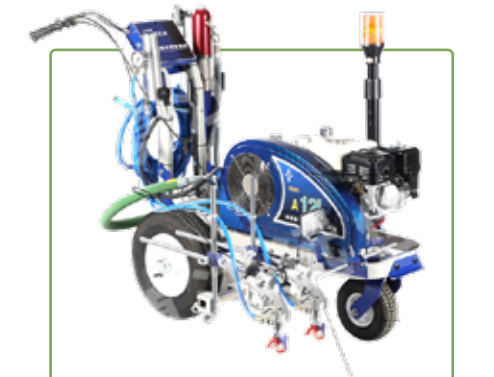
Retroreflectometer, RI+Qd visibility



Hand Push Thermoplastic Road Marking Machine



Oscillating Convex Thermoplastic Road Marking Machine



Cold Spray Scribing Machine



Retroreflectometer for Road Marking



Retroreflectometer For Raised Pavement Markers



Road Marking Thickness Gauge



Double(Single) Tank Hydraulic Thermoplastic Paint Preheater



Road Marking Remover



Primer Machine



Sign Retro-Reflection Meter



Mlti-angle Rtroreflective Coefficient Tester



Spectrophotometer



Booster



Ride-on Thermoplastic Road Marking Machine



Fully Recyclable High-pressure Water Road Lines Removal Equipment



220001341969



中国认可
检测
TESTING
CNAS L4566



文通GJC实工(2020)-004

检测报告

TEST REPORT

报告编号(No. of Report):2023JTL0121G

产品名称
Name of Product 路面标线涂料

委托单位
Client 浙江新风路标涂料有限公司

检测类别
Test Category 抽样检测

签发日期
Date of Issue 2023年08月28日

交科院检测技术(北京)有限公司
CATS Testing Technology (Beijing) Co., Ltd.



交科院检测技术(北京)有限公司检测报告

CATS Testing Technology (Beijing) Co., Ltd. Test Report



报告编号(No. of Report):2023JTL0121G

第1页共5页(Page 1 of 5)

产品名称 (Name of Product)	路面标线涂料	样品编号 (Sample Number)	2023JTL0121
规格型号 (Specification & Model)	白色热熔反光型	样品状态 (Sample Status)	白色粉末状固体, 无结块
委托单位 (Client)	浙江新风路标涂料有限公司	联络信息 (Contact Information)	张工, 18367228555
生产单位 (Manufacturer)	浙江新风路标涂料有限公司	检测类别 (Test Category)	抽样检测
抽样地点 (Sampling Location)	浙江省长兴县林城镇新林北路6号生产单位成品库	抽样基数 (Sample Quantity)	1t
抽样数量 (Sampling Amount)	5kg	产品批号/生产日期 (Serial Number/ Production Date)	2023-05-05
抽样人 (Sampling Person)	卞军、米涛	抽样日期 (Sampling Date)	2023/07/10
检测地点 (Test Location)	顺义实验室	到样日期 (Receiving Date)	2023/07/30
仪器设备 (Test Equipment)	见第2页	检测日期 (Test Date)	2023/08/08~08/25
检测项目 (Test Item)	1. 容器中状态 2. 预湿玻璃珠(预湿玻璃珠含量、预湿玻璃珠成圆率) 3. 施划性能 4. 涂层性能(涂层外观、色度性能、耐水性、耐碱性) 5. 密度 D 6. 软化点 ST 7. 不 粘胎干燥时间 8. 抗压强度 9. 耐磨性 10. 涂层低温抗裂性 11. 加热稳定性 12. 流动度 13. 耐热变形性 14. 总有机物含量		
检测依据 (Test Basis)	JT/T 280-2022《路面标线涂料》		
判定依据 (Judgement Basis)	JT/T 280-2022《路面标线涂料》		
检测结论 (Test Results)	经抽样检测, 浙江新风路标涂料有限公司生产的路面标线涂料产品, 所检项目 符合 JT/T 280-2022《路面标线涂料》标准中白色热熔反光型路面标线涂料的相关技 术要求。 签发日期: 2023年08月28日 (盖章)		
备注 (Comments)	—		
报告 Reported by	卞军	审核 Audited by	张中头
		批准 Approved by	张中头

